

AFRICA

- **RWE Dea** discovered gas from a deep well with a depth of 5116 m in the Reggane North region, Block 351c and 352c in Algeria. The Reggane-6 well tested gas from the Ordovician formation for the first time. The Reggane North concession includes a consortium of **Repsol YPF**, operator, **Sonatrach**, and **Edison International**, in which RWE Dea holds a 30% share. RWE Dea also made an oil discovery in Area 195 at Sirte basin (700 km east of Tripoli, 150 km southwest of Ras Lanuf). Total production reached 1,981 BOPD from the Dahra formation at a depth of 1353 m and from the Beda formation at a depth of 1457 m.
- **Sonangol EP, BP Angola**, operator, and **Sonangol Sinopec** started production from the Greater Plutonio development area in Block 18, offshore Angola. The area is located 160 km northwest of Luanda and includes the Galio, Cromio, Paladio, Plutonio, and Cobalto fields in water depths from 1200 to 1450 m. The development will contain 43 wells—20 producers, 20 water injectors, and 3 gas injectors.

ASIA

- **Reliance Industries** drilled its first well in the Cauvery deepwater basin off the east coast of India. This is the first hydrocarbon discovery in the basin. The deepwater Block CY-DWN-2001/2 is located in the Cauvery basin, with an area of 14 325 km². Reliance holds a 100% interest in this block. The well is located in a water depth of 1185 m and was drilled to a target depth of 4081 m. During the drillstem test, the well produced 31 MMscf/D of gas with 1,200 B/D of condensate from the main zone. Reliance also made an oil discovery in the deepwater Block KG-DWN-98/1 (KG-D4) located in the Krishna basin. This is the first oil discovery in the basin. The well is located in a water depth of 565 m and was drilled to a target depth of 3595 m. During the drillstem test, the well flowed 596 BOPD.
- **Santos** started oil production on the Oyong field in the Sampang PSC,

approximately 70 km east of Surabaya in Indonesia. After an initial ramp-up period, gross oil-production rates are expected to stabilize at 8,000 to 10,000 BOPD.

- **CNOOC** reports that Phase II of the Southeast Sumatra Gas Project has commenced. The contractual gas-delivery rate of Phase II is 78.4 MMcf/D. The project is located 120 km offshore West Java in Indonesia, with an average water depth of 30 m. The development facilities in Phase II include a production/processing platform, gas plant, gas-compression/processing platform, and three subsea pipelines.

EUROPE

- **Total** made a gas discovery in Block 205/5a in 610 m of water, 100 km northwest of the Sullom Voe Terminal on the Shetland Islands. Total, with a 47.5% interest, is the operator of this block, alongside partners **Eni UK** (22.5%), **Dong E&P** (20%), and **Chevron North Sea** (10%). The Tormore 205/5a-1 discovery well was drilled to a total depth of 3036 m and tested at 32 MMcf/D.
- **Statoil** made an oil discovery in the Ragnarrock prospect near the Sleipner area in the North Sea. The find was made with the 16/2-3 exploration well in Production License 265, which is 35 km east of the Statoil-operated Gudrun discovery. The well was drilled to a total depth of 1856 m below sea level. The licensees are Statoil, operator, with 30%, **Petoro** (30%), **Den norske Oljeselskap** (30%), and **Talisman** (10%).
- Norway's Ormen Lange field on the Norwegian continental shelf has begun producing gas. Maximum daily exports from the Ormen Lange field will amount to 70 million m³ of gas and 50,000 bbl of condensate. **Norsk Hydro** is operator with responsibility for the planning and development phase of Ormen Lange.
- **Norsk Hydro** found gas and condensate in Jurassic reservoir rock in Well 6407/7-7 S located 5 km northwest of the Njord A platform. The size of the discovery is estimated at 1 to 6 billion std m³ of recoverable gas and

0.5 to 2.5 million std m³ of recoverable condensate.

- **Pertra** discovered oil in Paleocene sands in the 15/12-18S wildcat well. The discovery is located 16 km northwest of the Varg field offshore Norway. The well proved oil in parts of 36-m-thick sandstones of the TY formation at a depth of 2550 m. The reservoir section will be sampled and evaluated before a decision to drill a sidetrack is made.
- **Volga Gas** completed the 3D-seismic acquisition of 20 km² over the Vostochny-Makarovskoye license area and has spudded Vostochny-Makarovskoye Well No. 1. The data will be processed and interpreted to develop a more efficient drilling program. The seismic crew will move to the Karpenskiy license area to acquire 140 km² of 3D seismic over six identified suprasalt structures during the winter of 2007–08.

NORTH AMERICA

- **Pemex** reached record production of 606,538 BOPD at Ku Maloob Zaap, a group of offshore oil fields. The area produces 14% of Mexico's total oil output. According to reports, Pemex plans to drill 12 new development wells at Ku Maloob Zaap this year.

SOUTH AMERICA

- **Petrobras** confirmed the discovery of light oil at a second well drilled at the ultradeep Santos basin Tupi field. The 3-BRSA-496-RJS well showed a 2,000-B/D flow of 28°API oil. The flow was limited because of operational and safety installations during the test. The well lies at a water depth of 2166 m, 286 km south of Rio de Janeiro.
- **Geopark** discovered a gas field on the Fell Block in Chile with the successful testing of the San Miguel 1 exploration well. The well is currently testing approximately 3.0 MMcf/D of gas and 100 BLPD from the Springhill formation at a depth of approximately 3020 m. These are preliminary results, and additional production testing will be required to determine future flow rates and the extent of the reservoir.

JPT



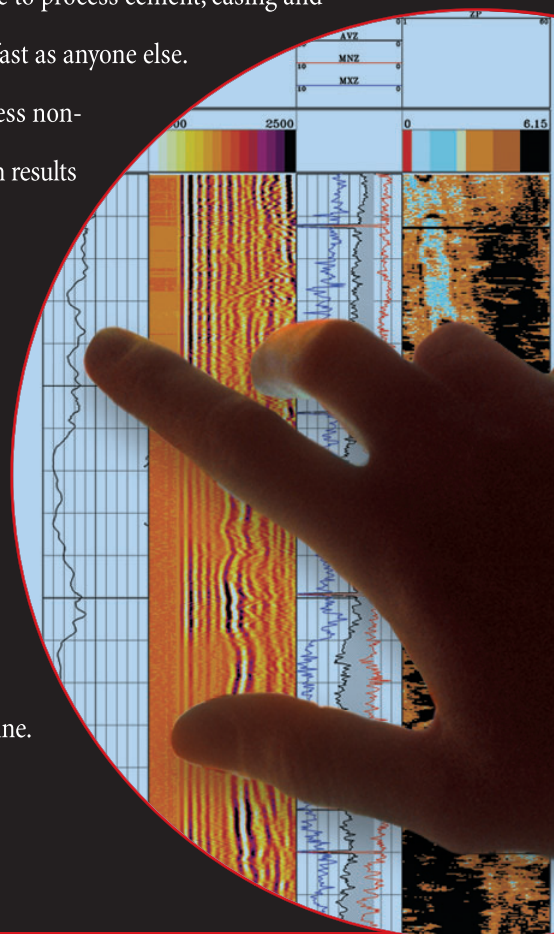
For rock-solid reliability — miles underground — get cement and casing evaluation that's *twice* as fast.

Halliburton's Fast Circumferential Acoustic Scanning Tool (FASTCAST™) service can be coupled with our Advanced Cement Evaluation (ACESM) service to process cement, casing and riser data at least twice as fast as anyone else.

For operators, this means less non-productive rig time — which results in significant cost savings.

Before you get in too deep, look into Halliburton Wireline and Perforating Services — the leader in reliability and service excellence. For more information, please visit www.halliburton.com/wireline.

Unleash the energy.™



HALLIBURTON